

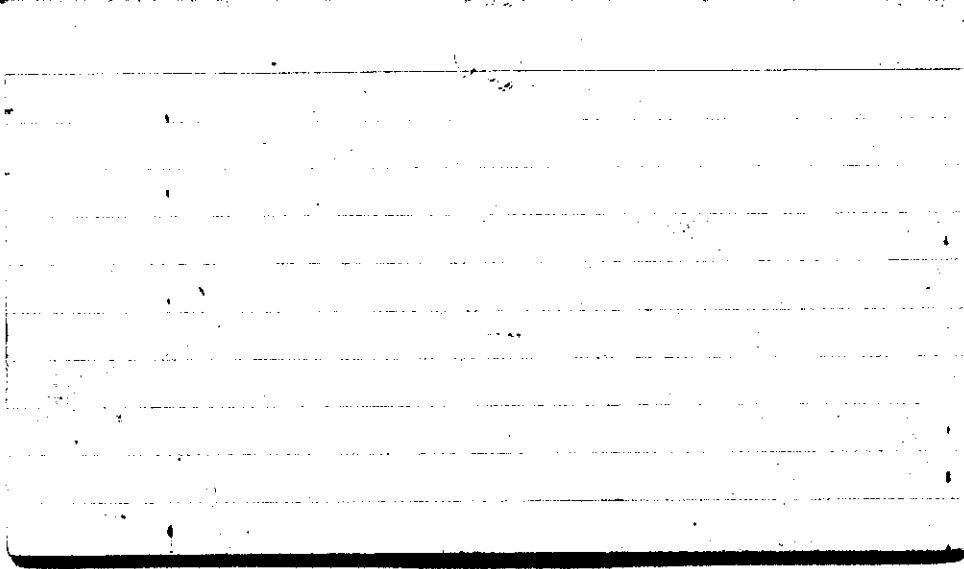
STATE COLLEGE, Pa. Date

APR - 1 1943

Time
0700

Max. 77	Wind F WSW 3	Barom. t 77	General Obs. ∞ 0700, 1300 °
Min. 53	Vis. km. 15	p 28.72	
Dry 50	Clouds 6	p (red.) 28.60	
Wet 60	Wet Bulb 50		
R.H. 56	Wet Bulb 50	Morn. Pily cldy	Foren. OVC.
Precip. — mm/ — in.		Noon OVC. Light Rain	Aftern. OVC. → cldy → Pily cldy
Snowfall/-Depth — in/ — in.		Eve. Pily cldy → Fair	Night Clear

A.M.



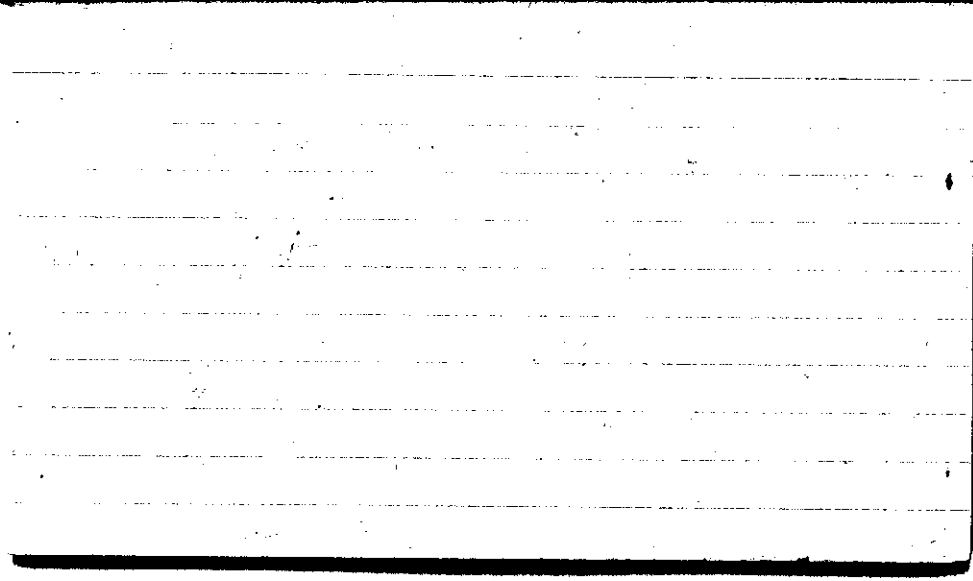
STATE COLLEGE, Pa. Date

APR - 2 1943

Time
0700

Max. 62	Wind F WSW 4	Barom. t 74	General Obs. ∞ ∞ 100600, 1000, 1100, 1200, 1300
Min. 42	Vis. km. 9	28.55	*1-1400, 1500, 1800, 1900, 2000
Dry 46	Clouds 5	p(red.) 38.44	*2-2100
Wet 48.1 45.1	Cb, Fc Cs, Cc, Ci		*1-2200, 2300, 2400
R.H. 80	Ci, fil.	Morn. pty cldy	Foren. cldy \rightarrow ovc.
Precip. T mm / T in.		Noon ovc	Aftern. cldy snow
Snowfall / -Depth — in / — in.		Eve. cldy snow	Night cldy, SNOW

A.M.



STATE COLLEGE, Pa. Date

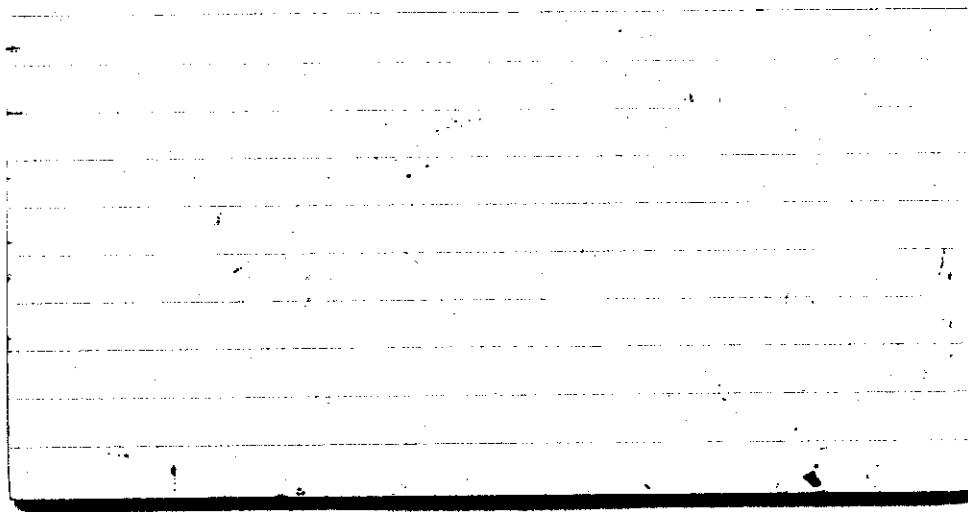
APR - 3 1943

Time

0700

Max. 51	Wind P NW 4	Barom. t 70	General Obs. ∞ ↓ PK 0000-0600 * 0100
Min. 21	Vis. km. 15	28.95	
Dry 22	Clouds 4	p(red.) 28.84	
Wet 22.0 19.8	Cu Fc		
R.H. 70		Morn. Ptlly cldy	Foren. Ptlly cldy → Cldy
Precip. T mm / T in.		Noon Cldy → pty cly	Aftern. Ptlly cldy → fair
Snowfall / -Depth T in / T in.		Eve. Fair → Clear	Night Clear

AM:



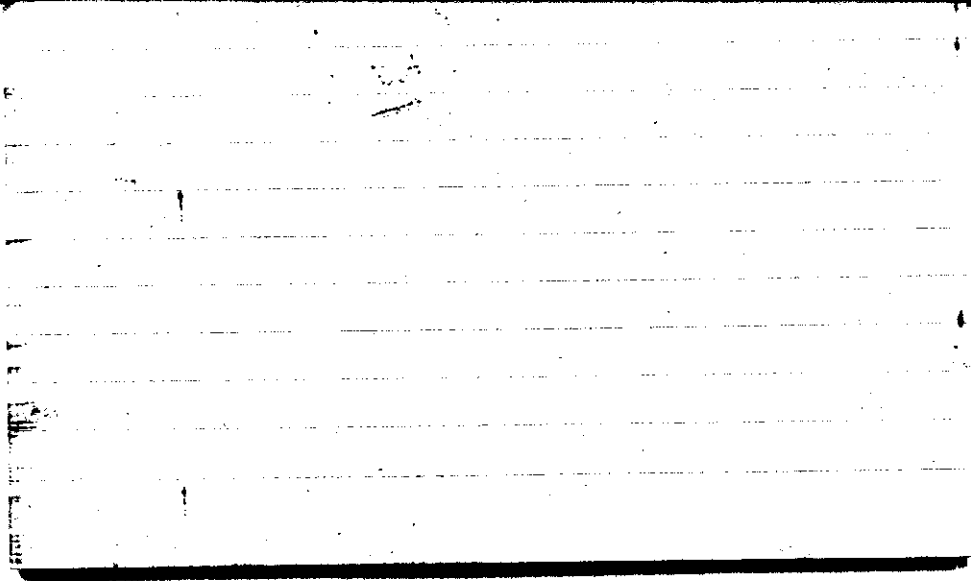
STATE COLLEGE, Pa. Date

APR - 4 1943

Time


0700

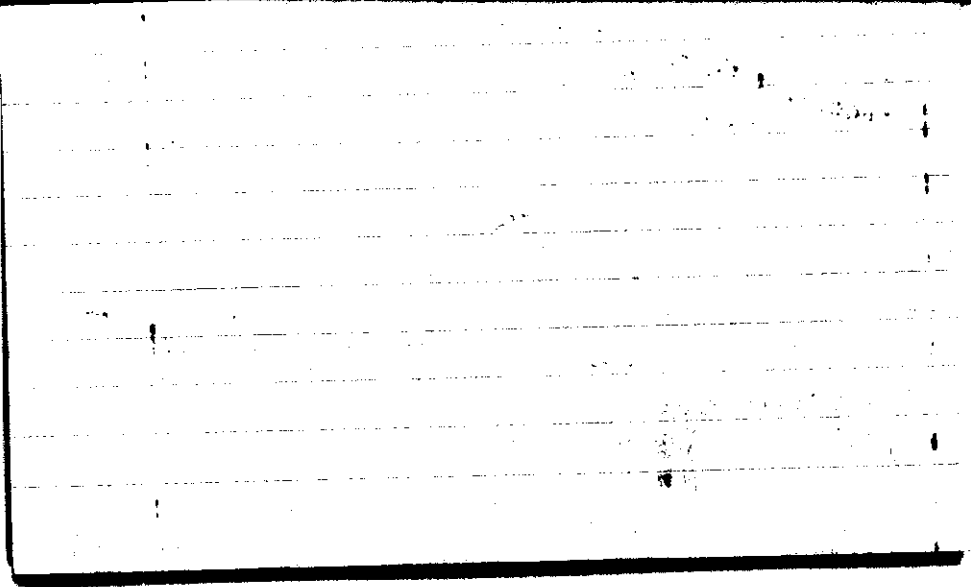
Max. 38	Wind F SW 2	Barom. t 69	General Obs. 00 * 1318 R 1755-1830	☉ 0645- 0750
Min. 20	Vis. km. 20	p 29.13	▲ 1720 ▲ 1730-1820	
Dry 24	Clouds 4	p(red.) 29.02	9° 18.50 10° - 2400	
Wet	Ac lent.			
R.H. 80	Ci pol. Cs Cc, Ci fd.	Morn. Pcly cldy	Foren. cldy	
Precip. — mm/ — in.		Noon ovc	Aftern. ovc. snow, hail, sleet	
Snowfall/-Depth — in/ — in.		Eve. Ovc. Thunderstorm	Night ovc rai	
A.M.				



STATE COLLEGE, Pa. Date APR - 5 1943

Time
0700

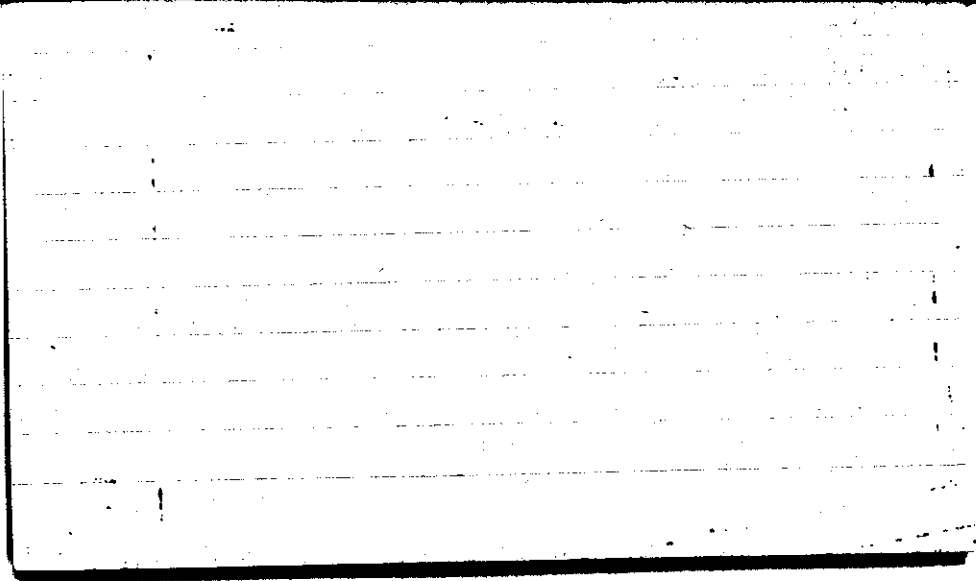
Max. 42	Wind P WNW 7	Barom. t 67	General Obs.	
Min. 23	Vis. km. 25	28.58	0000 - 0300 •	
Dry 39	Clouds 3	p(red.) 28.48	1025 - 1500 1x1° 2000, 2200, 2300, 1x1° 2400	
Wet 400 34.4	Sc, Fc			
R.H. 57		Morn. Pcly cldy → Fair	Foren. cldy snow	
Precip. 7.8 mm / 0.31 in.		Noon cldy Snow	Aftern. cldy Pcly Snow	
Snowfall / -Depth T in / T in		Eve. Pcly cldy Snow	Night Pcly cldy	
AM.				



STATE COLLEGE, Pa. Date APR - 6 1943

Time
0700

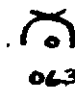

Max. 44	Wind P NW 5	Barom t 68	General Obs. 0	
Min. 20	Vis. km. 20	28.95	1x1° 0100	
Dry 20.	Clouds 2	p(red.) 28.85	5° 0400	
Wet 21.1 18.1	Se, Fc		1x1° 0500	
R.H. 57		Morn. Fair	Foren. Fair	
Precip. T mm / T in.		Noon Fair → Clear	Aftern. Clear	
Snowfall / -Depth T in / T in.		Eve. Clear	Night Clear	
AM.				



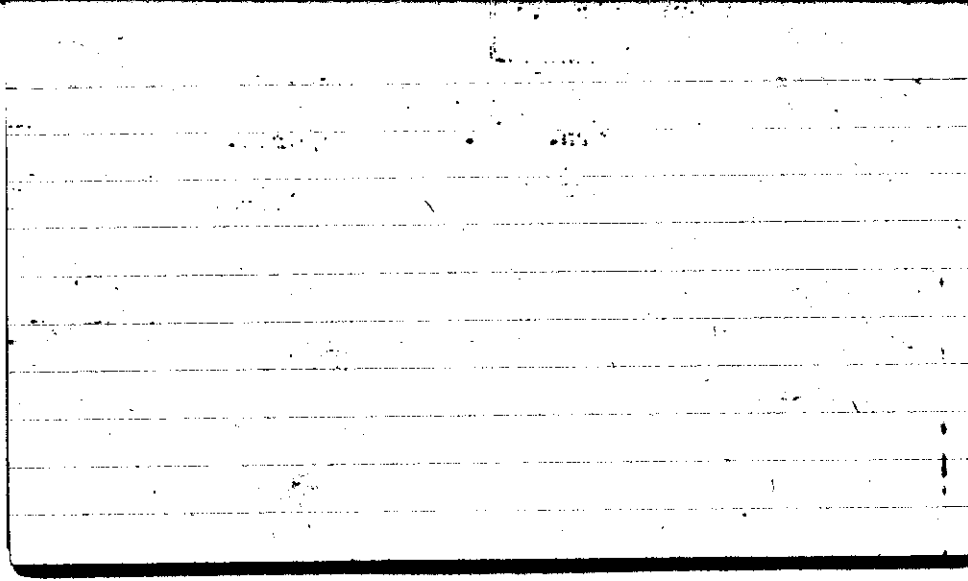
STATE COLLEGE, Pa. Date

APR -7 1943

Time
0700

Max. 36	Wind <i>W 1</i>	Barom. <i>t 69</i>	General Obs. <i>o op</i>	
Min. 19	Vis. km. <i>18</i>	<i>29.11</i>	<i>1730 * 2200</i>	
Dry 23	Clouds <i>7</i>	p(red.) <i>29.00</i>	 0630-  1050	
Wet 23.8 20.9	<i>Cs, Ci, fog</i>			
R.H. 63		Morn. <i>ptly cldy</i>	Foren. <i>cldy</i>	
Precip. — mm/ — in.		Noon <i>cldy → Ovc.</i>	Aftern. <i>Ovc.</i>	
Snowfall/ -Depth — in/ — in.		Eve. <i>Ovc. *</i>	Night <i>Ovc. + cldy. *</i>	

AM

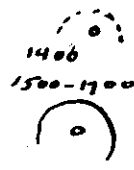


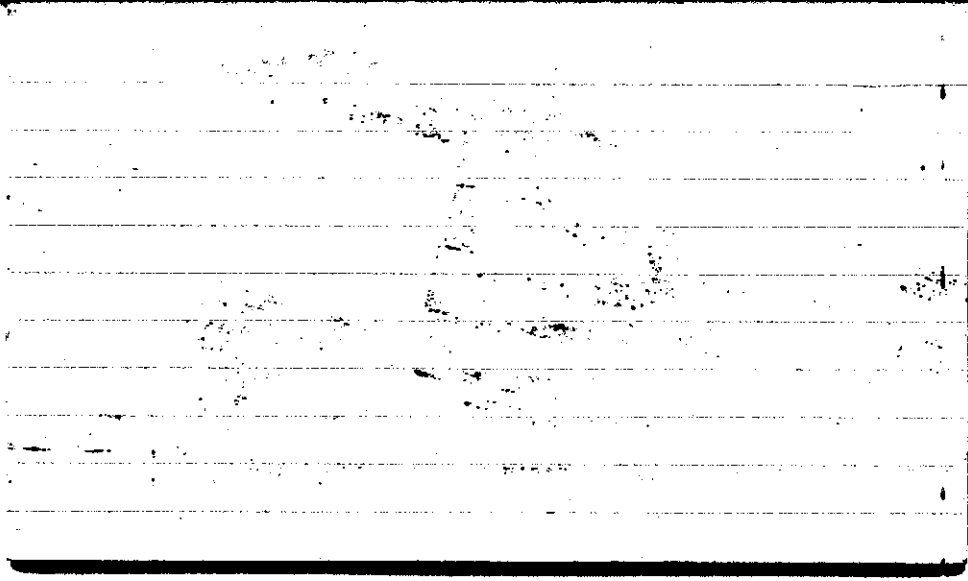
STATE COLLEGE, Pa. Date

APR - 8 1943

Time

0700

Max. 43	Wind P Calm	Barom. t 70	General Obs. ∞	
Min. 22	Vis. km. 8	p 28.83		
Dry 36	Clouds A, C,	p(red.) 28.72		
Wet 34.5	Fc, Ac, hnt.			
R.H. 87	7	Morn. Pthly cdy	Foren. Pthly cdy → cdy	
Precip. 1.3 mm / .05 in.		Noon cdy	Aftern. Pthly cdy	
Snowfall / -Depth .3 in / T in.		Eve. Pthly cdy	Night Pthly cdy	
A.B.				

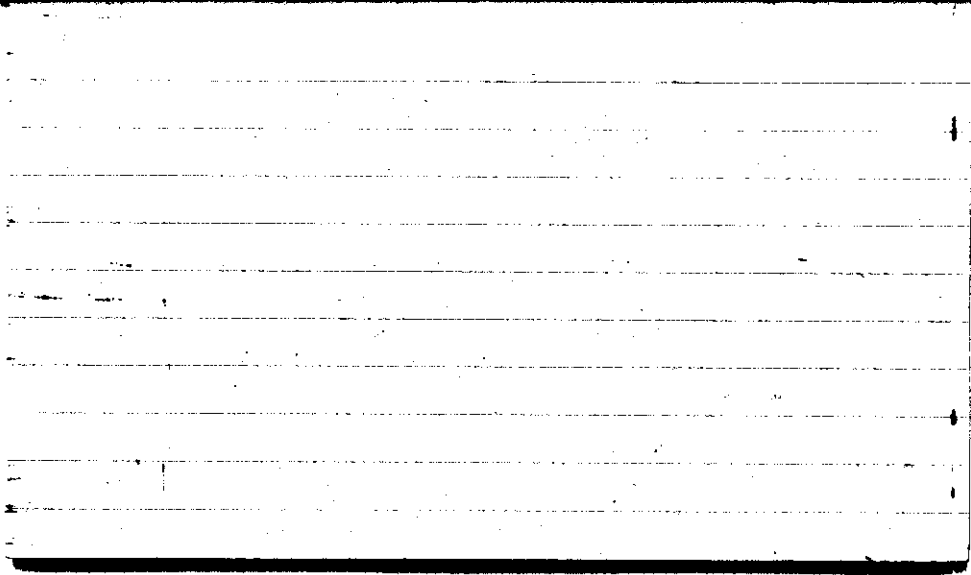


STATE COLLEGE, Pa. Date

APR - 9 1943

Time
0700

Max. 51	Wind P WSW 2	Barom. t 72	General Obs.	
Min. 35	Vis. km. 25	p 28.91	☉ 1500 - 1800 2045-2115	
Dry p.c.s) 36	Clouds 6	p (red.) 28.80		
Wet p.c.s) 34	Ac			
R.H. 82		Morn. pty. cly.	Foren. pt. cly.	
Precip. — mm / — in.		Noon pt. cly.	Aftern. pty cly	
Snowfall/-Depth — in / — in.		Eve. fair	Night fair → overcast	
A.R.				



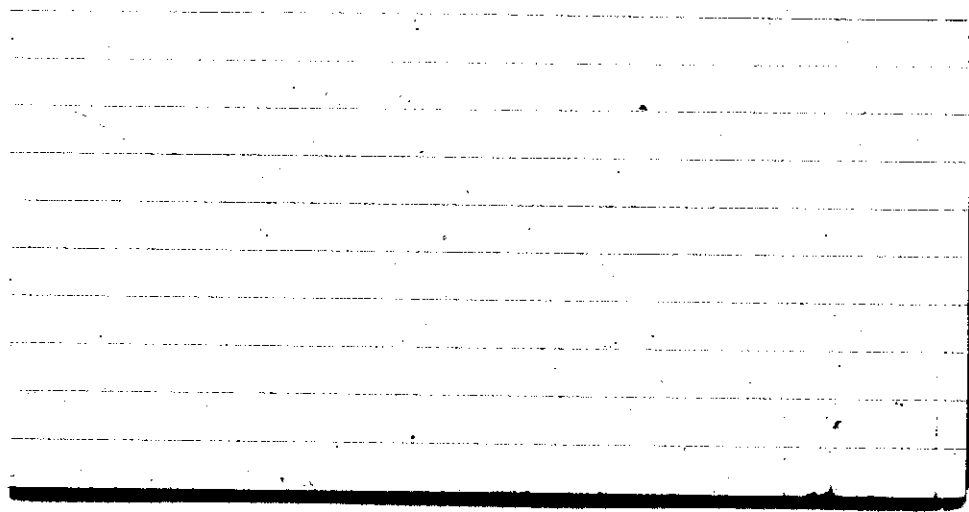
STATE COLLEGE, Pa. Date

APR 10 1943

Time
0700

Max. 63	Wind F NE 1	Barom. t 73	General Obs. 2345 2 HA I
Min. 36	Vis. km. 20	p 28.71	
Dry 41	Clouds 5	p (red.) 28.59	
Wet 37	Ac		
R.H. 69		Morn. Pth. cldy	Foren. Pth. cldy
Precip. mm/ — in.		Noon fair	Aftern. fair
Snowfall/-Depth — in/ in.		Eve. clear	Night clear

A. B.



STATE COLLEGE, Pa. Date

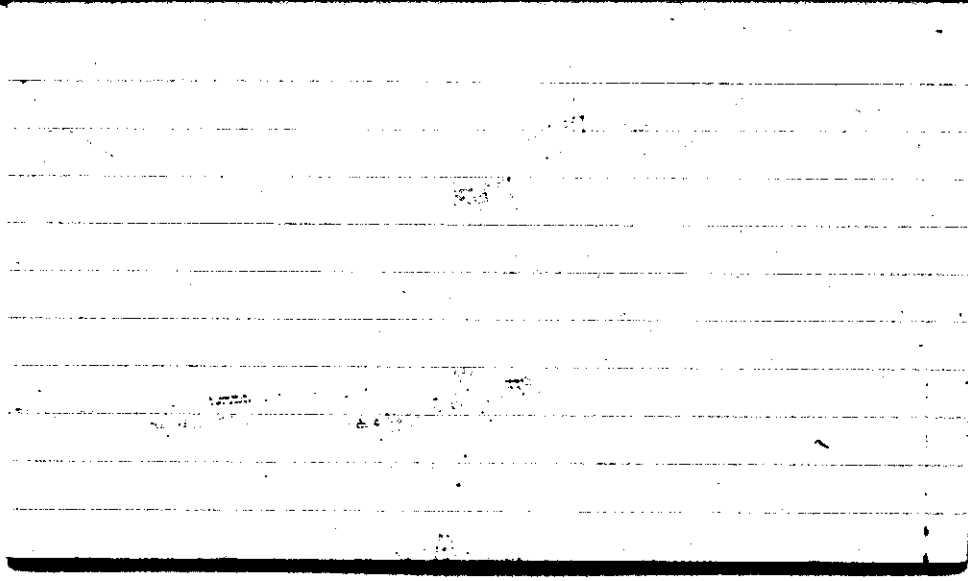
APR 11 1943

Time

0700

Max. 47	Wind F WNW 3	Barom. t 71	General Obs. ☽	
Min. 23	Vis. km. 20	P 29.00	☉ 1540-1700 as neb. a part.	
Dry 24	Clouds X	P(red.) 28.89	☉ 2130-2300 as neb.	
Wet 22				
R.H. 65		Morn. Clear	Foren. Clear	
Precip. — mm/ — in.		Noon Clear	Aftern. Clear	
Snowfall/-Depth — in/ — in.		Eve. Clear for	Night Clear for	

AR



STATE COLLEGE, Pa. Date

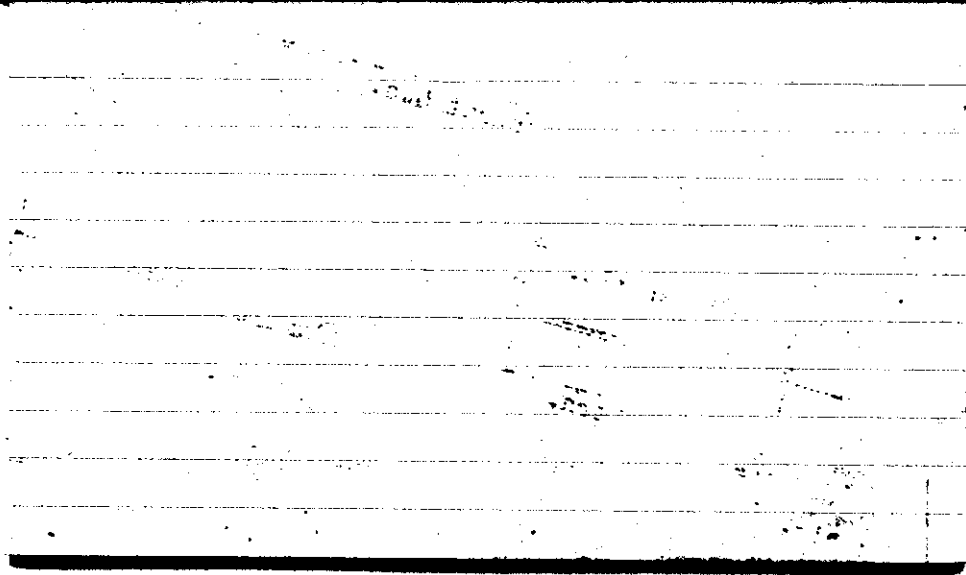
APR 12 1943

Time

0700

Max. 56	Wind F SW 3	Barom. t 76	General Obs. 2900-1700 } 2900-2100 }
Min. 24	Vis. km. 16	p 28.42	} 1755 sp: Telegram sent 1940 EDT
Dry 43	Clouds 10	p(red.) 28.30	
Wet 34	As, Fs.		
R.H. 36		Morn. Ovcst. rain	Foren. Ovc. rain
Precip. — mm/ — in.		Noon Ovc. rain	Aftern. Ovc.
Snowfall/-Depth — in/ — in.		Eve. Ovc.	Night Ovc.

A. B.



STATE COLLEGE, Pa. Date

APR 13 1943

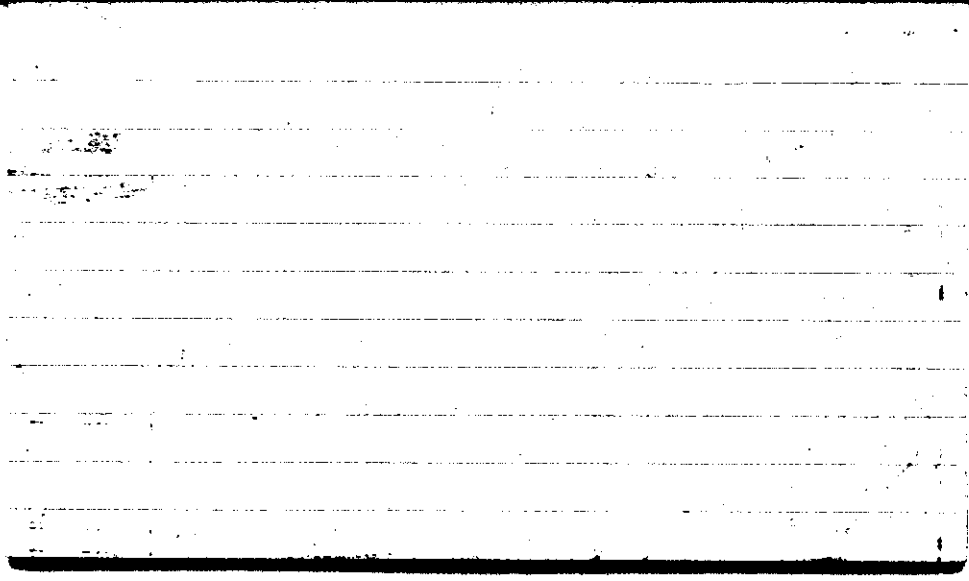
Time

28

0700

Max. 47	Wind F W 2	Barom. t 72	General Obs. 0200-0800 10' 2115 (●)
Min. 35	Vis. km. 6	28.31	1316 *
Dry 36	Clouds 10	p(red.) 28.20	0800-1310 10' 1310-1700 10'
Wet 35	Ns, Fs, St.		Sp. W. R.
R.H. 91		Morn. Ovc. rain	Foren. Ovc → cly → ovc.
Precip. 11.8 mm / .46 in.		Noon Ovc.	Aftern. Ovc. *+*
Snowfall/-Depth — in / — in.		Eve. Ovc.	Night Ovc. → cly

H. B.



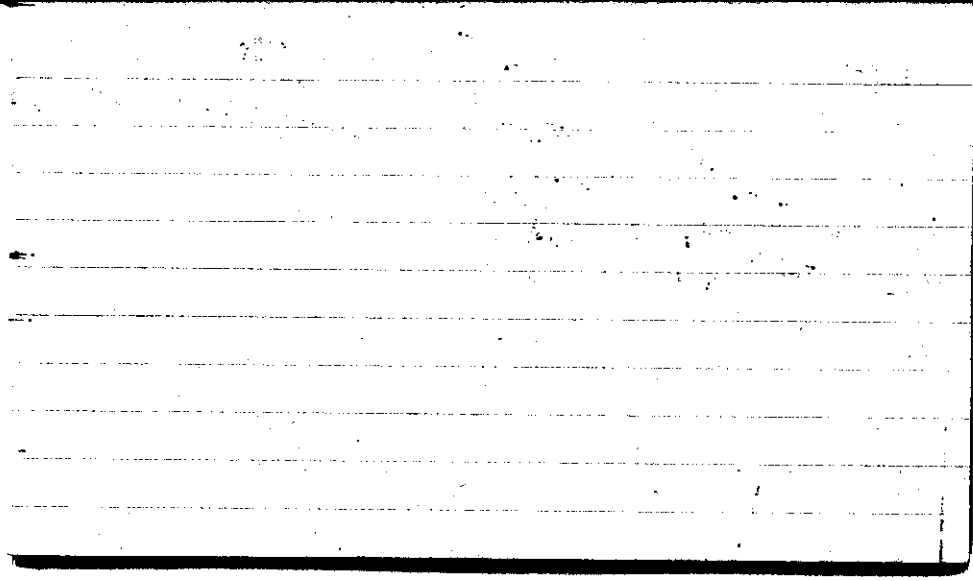
STATE COLLEGE, Pa. Date

APR 14 1948

Time
0700

Max. 44	Wind F WNW 4	Barom. t 64	General Obs. 1* 0700, 0800, 1930-2230
Min. 26	Vis. km. 20	28.40	0700 0900 → 1800, 2000
Dry 24.5	Clouds 7	p (red.) 28.31	
Wet 24	Fc, Sc, Alms Cb.		
R.H. 64		Morn. Ptzly cldy 5°	Foren. cldy 7°
Precip. 12.8 mm / .50 in.		Noon cldy 7°	Aftern. cldy as nub, as fine
Snowfall / -Depth 0 in / melt, in.		Eve. Ptzly cldy → Fair	Night Ptzly cldy

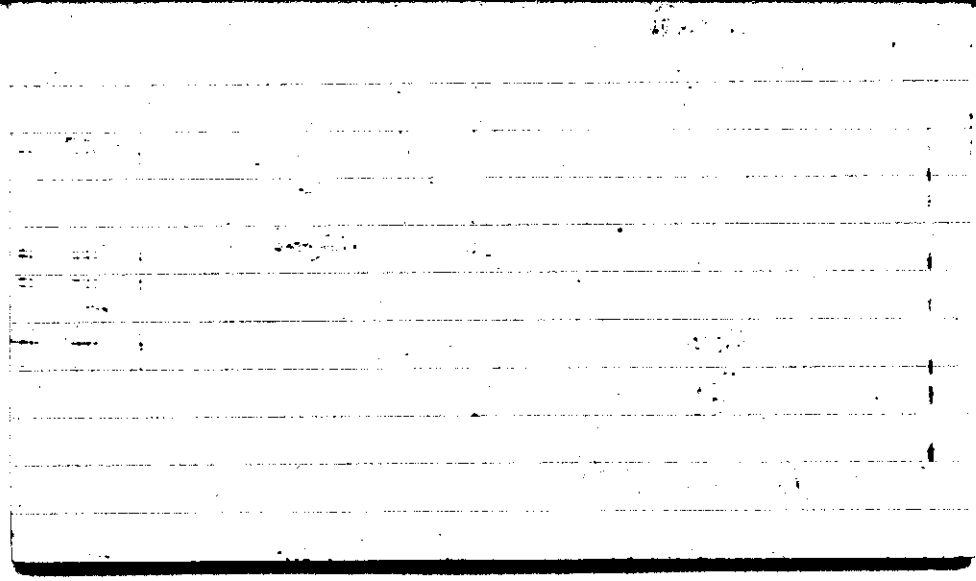
H.B.



STATE COLLEGE, Pa. Date APR 15 1943

Time
0700

Max. 33	Wind F W5	Barom. t 65	General Obs. †
Min. 21	Vis. km. 25	p 28.75	1* 0100, 0200 0300, 0400
Dry 23	Clouds <1	p(red.) 28.66	* 0840-1000
Wet 23.8 21.0	Fc. Ac tent.		1* 1100, 1400, 1600, 1700
R.H. 64		Morn. Clear → Fair → Ply cldy → cldy	Foren. cldy Occ. cldy
Precip. T mm / T in.		Noon Ply cldy	Aftern. ply cldy Occ. cldy
Snowfall / -Depth 0.2 in / 0.1 in.		Eve cldy → Ply cldy → Fair	Night Clear



STATE COLLEGE, Pa. Date

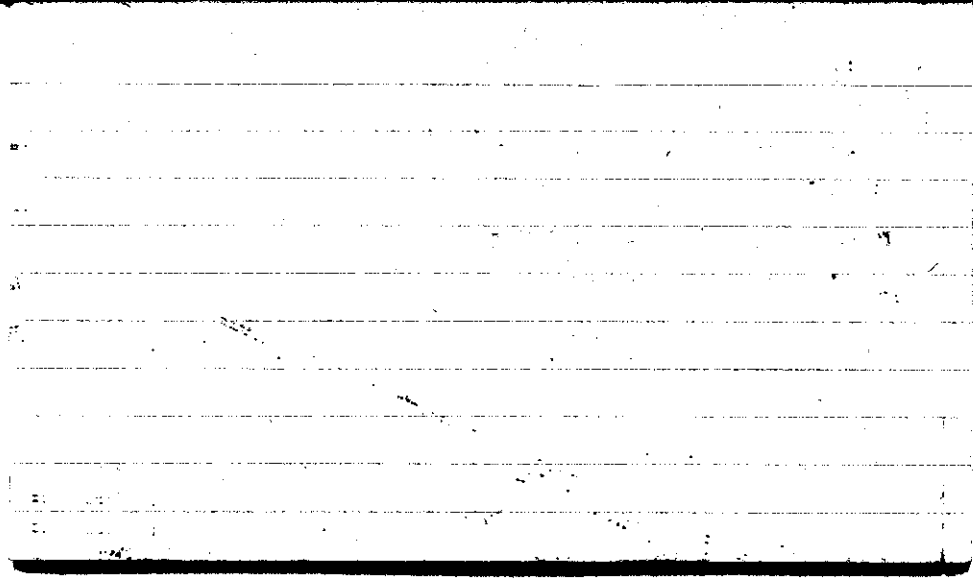
APR 16 1943

Time

0700

Max. 35	Wind F WSW 4	Barom. t 66	General Obs. *° 0645-0730 *'1600-1630	
Min. 23	Vis. km. 10	p 28.94	*° 0730-1030 °'1630-2130	*° 2130-2400
Dry 39	Clouds 10	p(red.) 28.84	*° 1200-1545	*° 1545-1600
Wet 27.7 36.7	As		Sp. Repy	
R.H. 88		Morn. Ovc., Light Snow	Foren. Ovc. Moderate Snow	
Precip. T mm / T in.		Noon Ovc. Mod. to Heavy Snow	Aftern. Ovc. Light Snow, Rain	
Snowfall / -Depth T in / T in.		Eve. Ovc. Rain	Night Ovc. Light Rain	

AM.



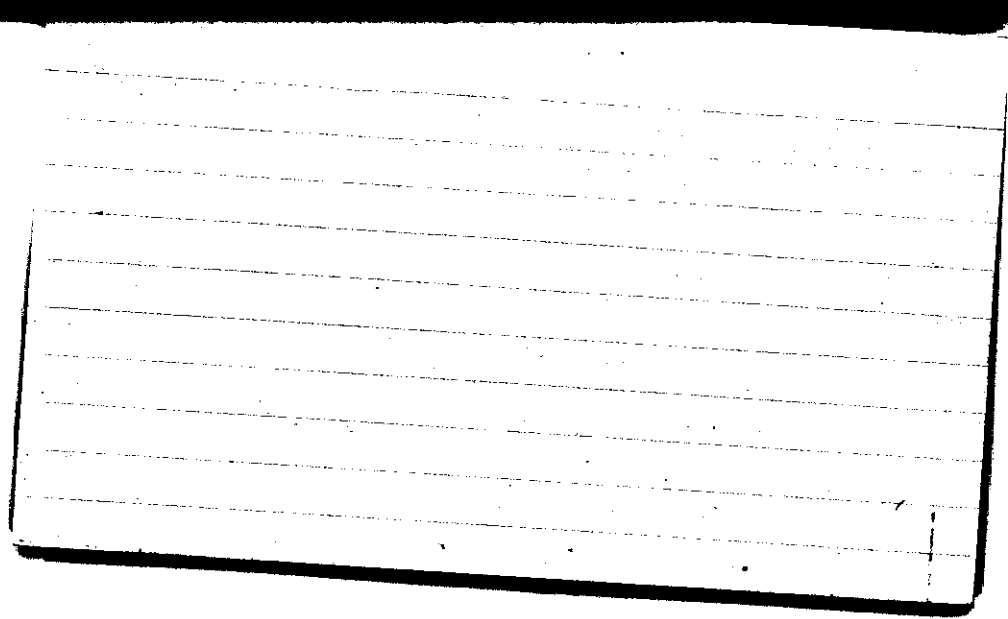
STATE COLLEGE, Pa. Date

APR 17 1943

TIME

0700

Max.	Wind F	Barom.	General Obs.
46	W 2	t 67	° 0800, 0200, 0300
Min. 27	Vis. km. 15	p 28.88	
Dry 41	Clouds 9	p (red.) 28.78	
Wet 39.6 36.4	As, Ac Cs, St. low		
R.H. 75		Morn. cldy	Foren. cldy → pth cldy
Precip. 15.2 mm / 0.60 in.		Noon pth cldy → Fair	Aftern. Fair → Clear
Snowfall / -Depth 5.2 in / 1.7 in.		Eve. Clear	Night Clear
A.M.			

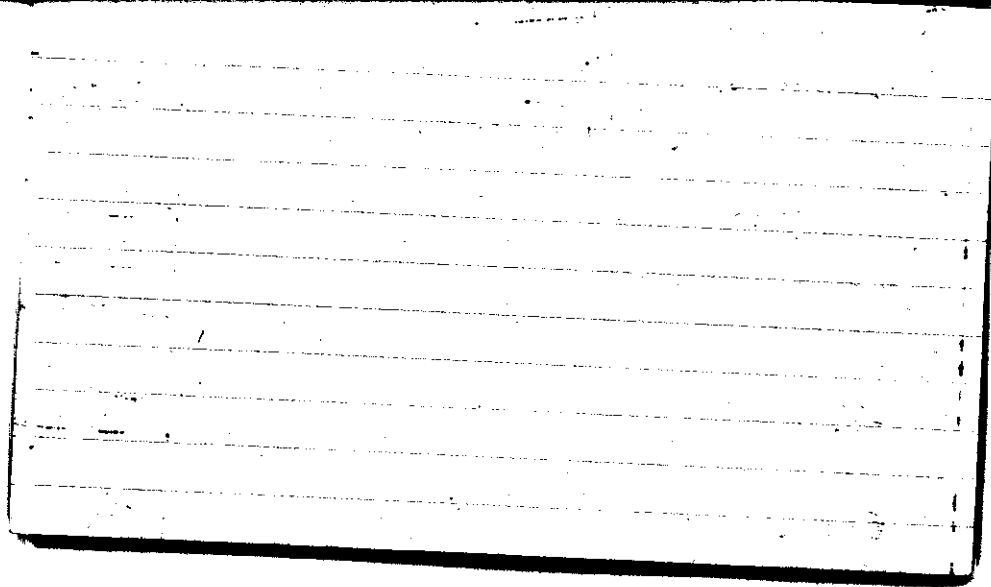


STATE COLLEGE, Pa. Date

APR 18 1943

Time
0700

Max. 47	Wind F NNW 1	Barom. t 71	General Obs. 00 L' • 15-1600	☉ 0720
Min. 27	Vis. km. 10	29.17	• 1600-1645 • 1645-2015	
Dry 30	Clouds 2	p(red.) 29.06	• 2015-2200 • 2200-2400	☉ 0745- 0900
Wet 31.0 28.9	Cs, Ci, fra. Cc			
R.H. 78		Morn. Fair → Ptlly Cldy (Cs, Ci, fil)	Foren. Ptlly Cldy	
Precip. — mm / — in.		Noon Ptlly cldy → Cldy	Aftern. Cldy → Ovc. Rain	
Snowfall / -Depth — in / — in.		Eve. Ovc. Rain Street	Night Ovc., Rain	

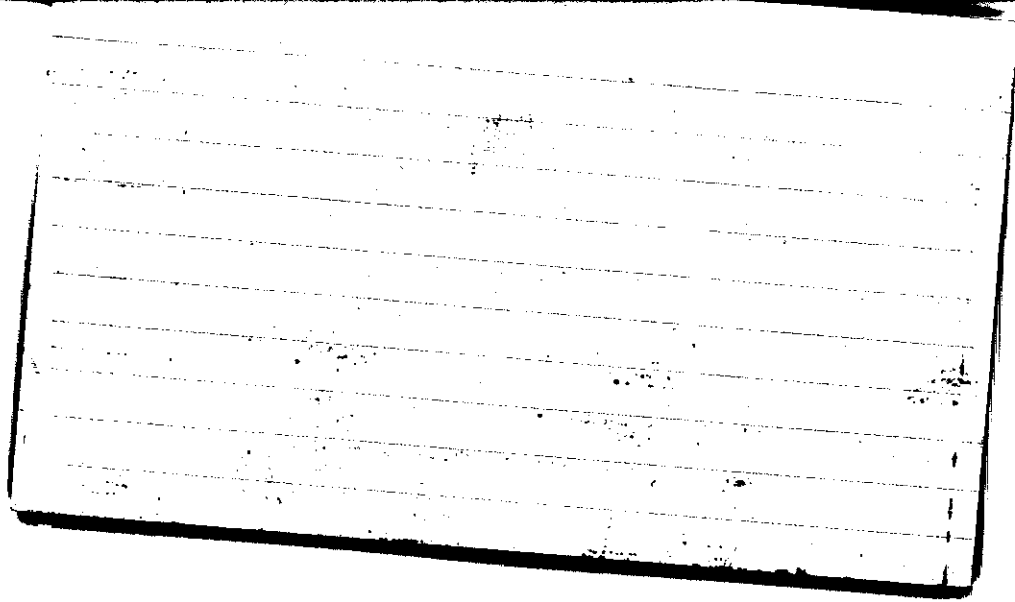


STATE COLLEGE, Pa. Date

APR 19 1949

0700

Max. 48	Wind P ENE 4	Barom. t 70	General Obs.	• 1030-1130
Min. 30	Vis. km. 6	28.87	• 0000-0130	• 1130-1315
Dry 37	Clouds 10	p(red.) 28.76	• 0130-0415	• 1315-2300
Wet 36.8	As, Fs		• 0415-0505	
R.H. 86			• 0505-0630	
			• 0630-0800	
			• 0800-0900	
			• 0900-1030	
				Sp. Rep.
			Morn. Ovc., Rain	Foren. Ovc., Rain
			Noon Ovc., Rain	Aftern. Ovc., Rain
Precip. 11.7 mm / 0.46 in.			Eve. Ovc.,	Night Ovc., Rain
Snowfall/-Depth			Light Rain	
— in / — in.				
A.M.				



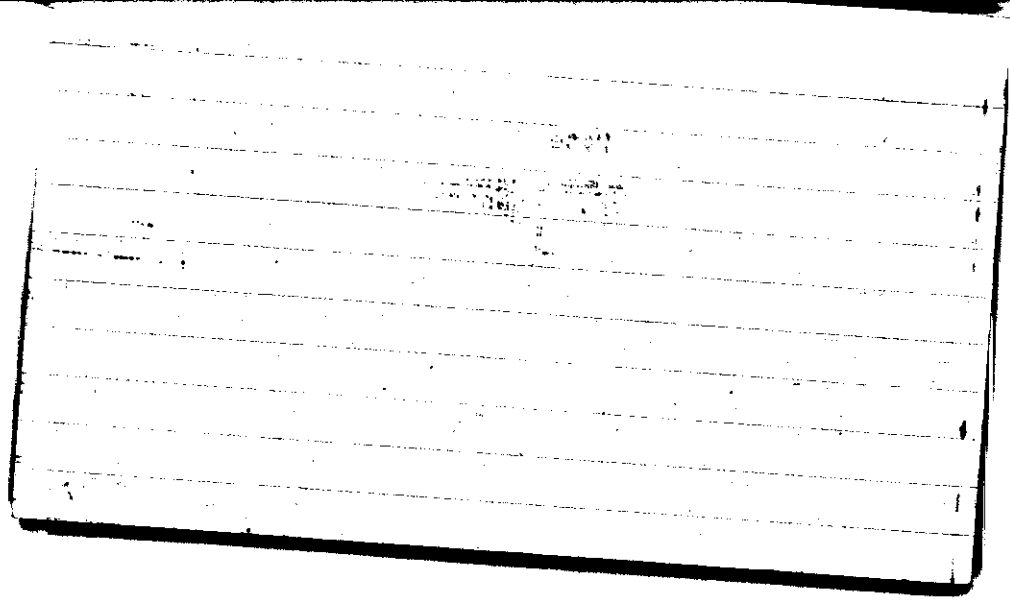
STATE COLLEGE, Pa. Date

APR 20 1943

0700

Max. 38	Wind \bar{P} WSW 1	Barom. t 69	General Obs. =	0
Min. 35	Vis. km. 4	28.59	19 ⁰⁰ 30-1000	1550-1610
Dry 37	Clouds 10	p(red.) 28.49	1917 i.S.	Two fires started by lightning.
Wet 37.2	As, Fs, 36.8	st. lent.	R 1925	
R.H. 96			1930-2400	
Precip. 10.8 mm / 0.43 in.			Morn. Ovc. drizzle	Foren. Ovc., Drizzle
Snowfall/-Depth			Noon Cldy	Aftern. Cldy
in/ in.			Eve. Cldy to ovc	Cs Cc Ci Fel.
			lower thunderstorm	Night ovc, snow

AM.

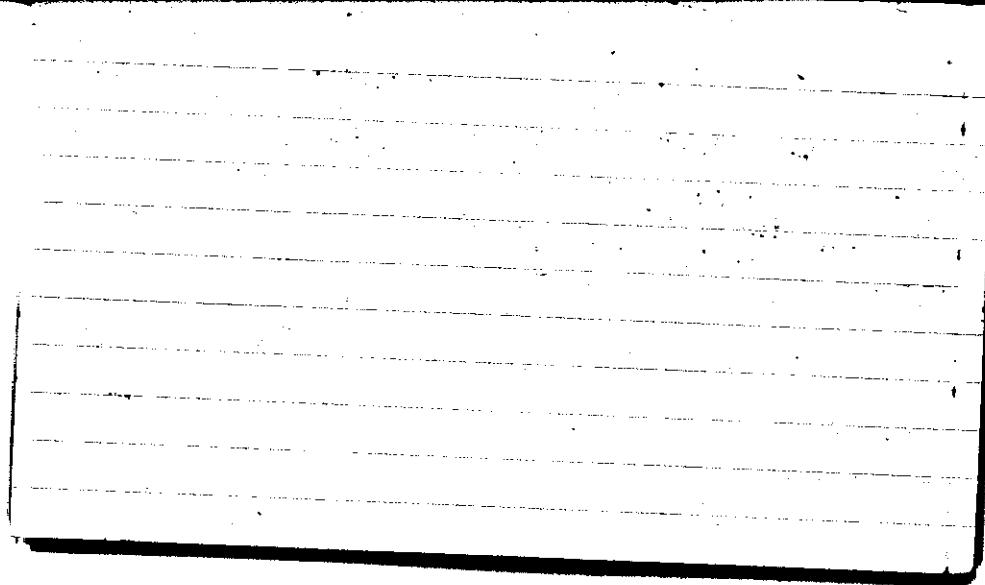


STATE COLLEGE, Pa. Date

APR 21 1943

Time
0700

Max. 59	Wind P W 3	Barom. t 70	General Obs.	
Min. 36	Vis. km. 7	28.61	10' 0000-1300	
Dry 37	Clouds 10	p (red.) 28.50	* 0715-0950	
Wet 36.9	As, Fs		0950-1300 Sp. R. 1200 0.34"	
R.H. 98			Sp. R. 1800 0.35"	
Precip. 22.5 mm / 0.89 in.		Morn. Ovc., Rain	Foren. ovc snow shown	
Snowfall/-Depth		Noon ovc rain	Aftern. ovc.	
— in / — in.		Eve. ovc	Night ovc	
AM.		SP. R. R.		

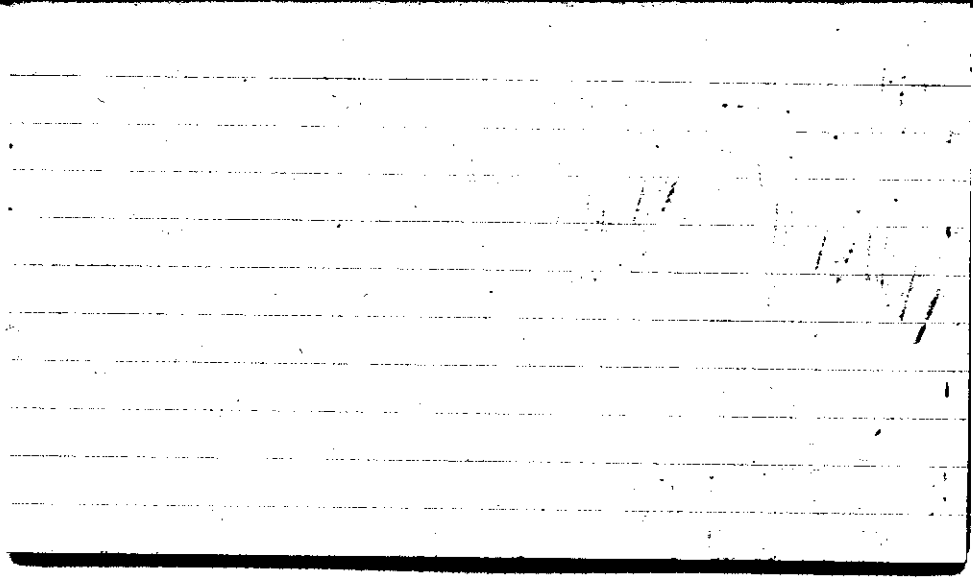


STATE COLLEGE, Pa. Date APR 22 1943

Time
0700

Max.	Wind F	Barom.	General Obs.	
41	W 2	t 69		
Min. 33	Vis. km. 20	p 28.94		
Dry 40	Clouds 10	p(red.) 28.83		
Wet 37	Sc As Fc			
R.H. 76		Morn. <i>over</i>	Foren. <i>pt cldy</i>	
Precip. 9.0 mm / 0.35 in.		Noon <i>pt. cldy</i>	Aftern. <i>pt. cldy</i>	
Snowfall/-Depth 0.3 in / — in.		Eve. <i>Fair</i>	Night <i>Clear</i>	

HN

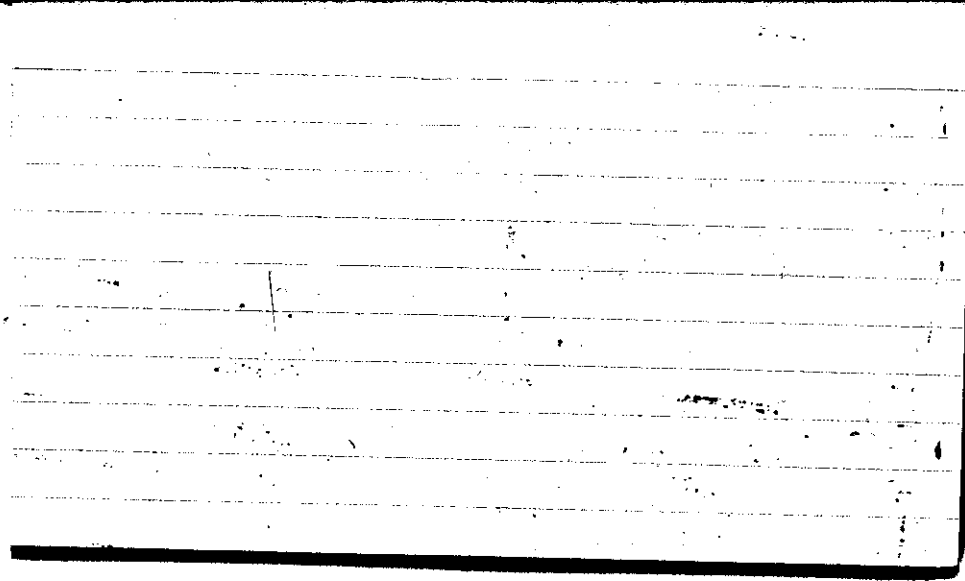


STATE COLLEGE, Pa. Date APR 23 1943

Time
0700

Max. 58	Wind F Calm	Barom. t 72	General Obs. = at base of mts 0645 Δ 0630	
Min. 34	Vis. km. 20	p 29.04		
Dry 38	Clouds —	p(red.) 28.93		
Wet 36				
R.H. 83		Morn. clear	Foren. clear	
Precip. — mm/ — in.		Noon Fair	Aftern. clear	
Snowfall/-Depth — in/ — in.		Eve. clear	Night clear	

CLT Telegram sent



STATE COLLEGE, Pa. Date

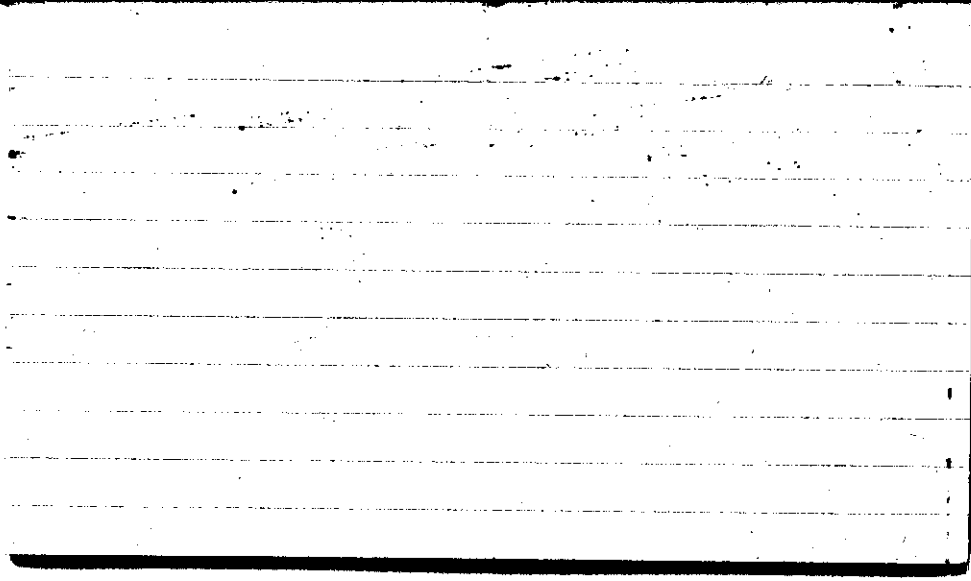
APR 24 1943

Time
0700

Max. 65	Wind F WSW 2	Barom. 74	General Obs. ② 0715-1030	
Min. 38	Vis. km. 20	P 28.91		
Dry 45 ⁴⁷	Clouds 5 C. ii	p (red.) 28.79		
Wet 42	Cc Cs			
R.H. 66	Ac	Morn. pt. cldy	Foren. cldy to over. to cldy	
Precip. — mm/— in.		Noon ptly cldy	Aftern. fair	
Snowfall/-Depth — in/— in.		Eve. ptly cldy to clear	Night clear	

CLT

Telegram sent

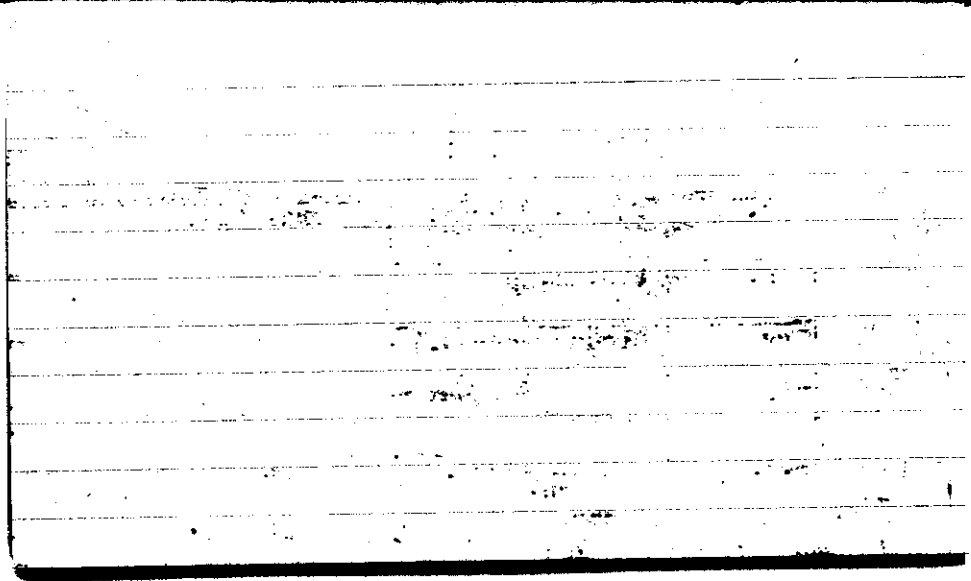


STATE COLLEGE, Pa. Date

APR 25 1943

Time
0700

Max. 70	Wind P SW 3	Barom. t 75	General Obs. ☐ 1330 ☉ -150	
Min. 45	Vis. km. 12	p 28.86	1920 ☉ - 2355 circumscribed halo in comets. in front of ☉	
Dry 50	Clouds 3	p(red.) 28.74		
Wet 45	4 floc as neb. cc			
R.H. 68		Morn. fair	Foren. cldy to over	
Precip. — mm / — in.		NOON over to cldy to fair	Aftern. pty cldy	
Snowfall / -Depth — in / — in.		Eve. cldy to over	Night cldy rain	
IV.				



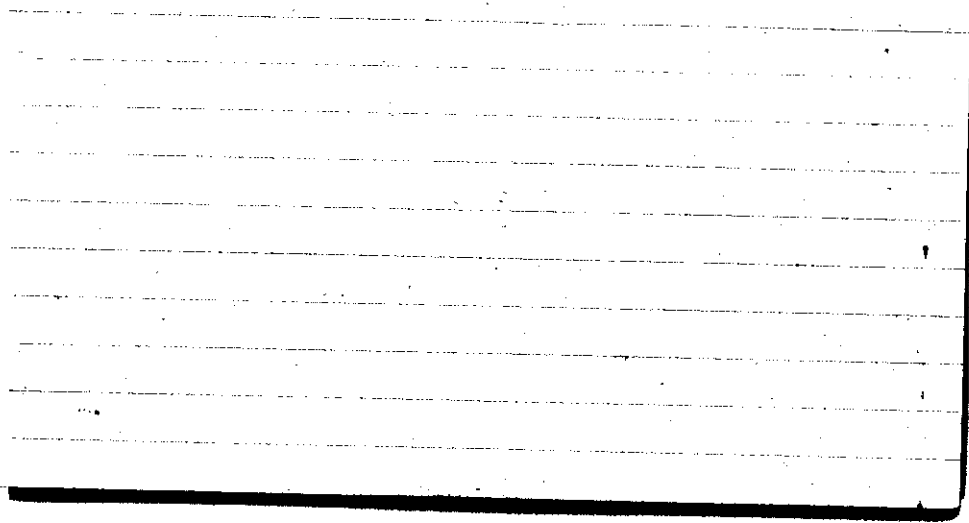
STATE COLLEGE, Pa. Date

APR 26 1943

Time
0700

Max.	Wind P	Barom.	General obs.	
73	WNW 4	t 77		
Min. 47	Vis. km. 25	2892		
Dry 48	Clouds /	p(red.) 28.79		
Wet 42				
R.H. 60		Morn. clear	Foren. fair (w, c, r)	
Precip. 0.2 mm / 0.01 in.		Noon fair	Aftern. fair	
Snowfall/-Depth - in / - in.		Eve. fair → clear	Night clear	

HN

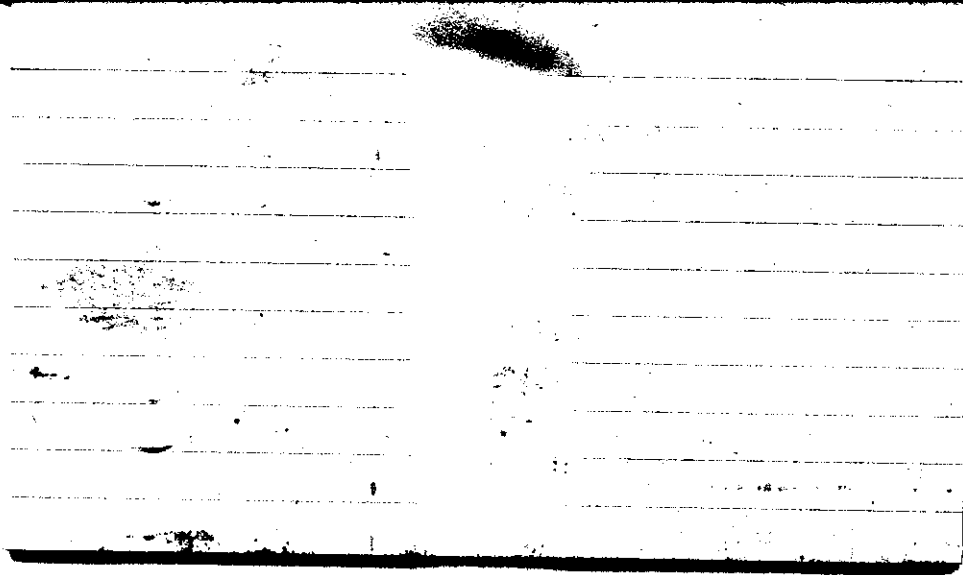


STATE COLLEGE, Pa. Date

APR 27 1943

Time
0700

Max. 67	Wind F SE 2	Barom. 77	General Obs. 0839 ° 1230 (1500 → 1510)	
Min. 40	Vis. km. 25	p 29.05		
Dry 45	Clouds 4	p (red.) 28.92	2300-2400 R & III.	
Wet 38	cs, cc, cf, cu, Alent.			
R.H. 52		Morn. Fair → Pthly clly.	Foren. clly → overst.	
Precip. — mm/ in.		Noon overst. Rain.	Aftern. clly	
Snowfall/ -Depth — in/ in.		Eve. clly → Pthly clly - Fair	Night Fair → Clear - Fair	
H. S.				

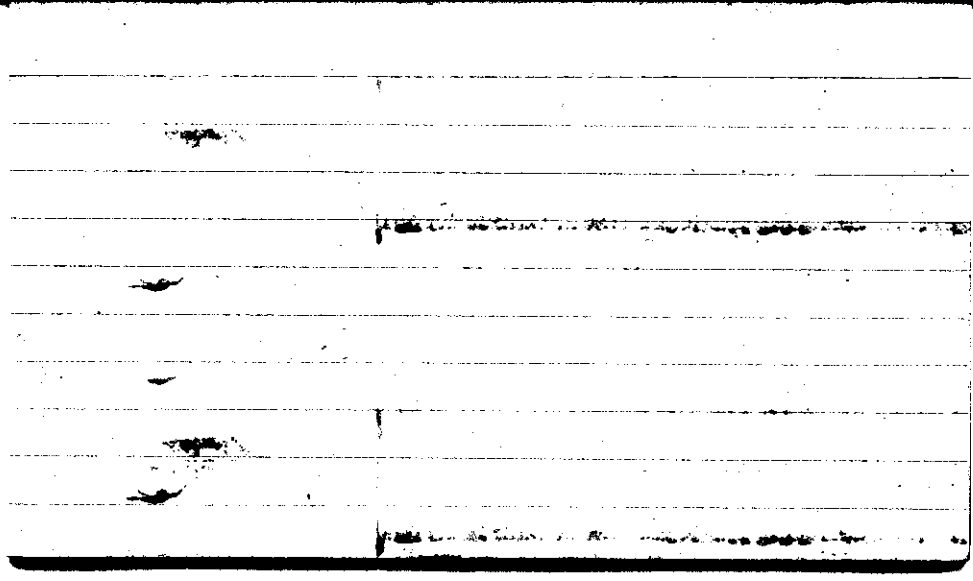


STATE COLLEGE, Pa. Date

APR 28 1943

Time
0700

Max. 63	Wind F W 5	Barom. t 73	General Obs. III 1010900, 1000, 1100, 1200, 1300
Min. 44	Vis. km. 20	p 28.80	
Dry 51	Clouds 7	p(red.) 28.68	
Wet 47	Sc		
R.H. 73		Morn. Ptlly. Cldy + clg	Foren. cldy → west.
Precip. 3.2 mm / .13 in.		Noon ovc. Light Rain	Aftern. Cldy
Snowfall/-Depth - in / - in.		Eve. Ptlly Cldy	Night Ptlly Cldy → clear
A.B.			



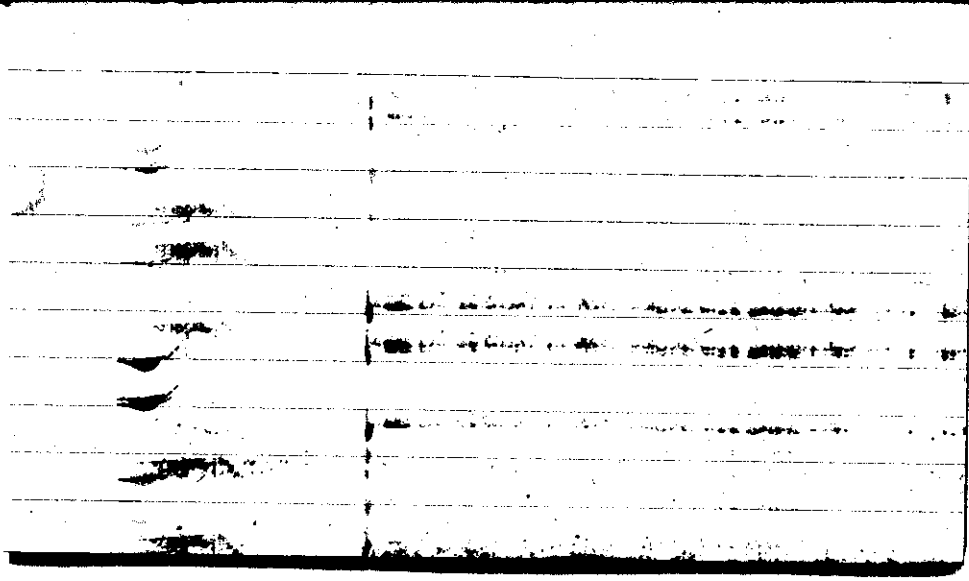
STATE COLLEGE, Pa. Date APR 29 1943

Time
0700

Max. 54	Wind F WNW 3	Barom. t 68	General Obs. a°
Min. 35	Vis. km. 35	p 29.18	
Dry 39	Clouds 1	p(red.) 29.08	
Wet 41.0 36.9	Fc, Ci, fil.		
R.H. 76		Morn. clear → Fair Ci, pr, Ci unc.	Foren. Fair → Pthly cldy
Precip. T mm / T in		Noon Pthly cldy	Aftern. Pthly cldy → Fair → Pthly cldy → cldy
Snowfall / -Depth — in / — in		Eve, Ovc.	Night Ovc.



AM.



STATE COLLEGE, Pa. Date

APR 30 1943

Time
0700

Max. 64	Wind \swarrow 3	Barom. t 70	General Obs. ° 0100, 0200, 0300, 0400, 0500 ° 0600 ° 0700, 0815 ° 0815-1115 ° 1300, 1400 ° 2000	10° 2100, 2200, 2300, 2400
Min. 39	Vis. km. 10	p 28.75		
Dry 47	Clouds 10	p(red.) 28.64		
Wet 46.9 43.7	Ns, Fs			
R.H. 78		Morn. <i>ovc.</i> , Rain	Foren. <i>ovc.</i> , Rain	
Precip. 3.1 mm / 0.12 in.		Noon <i>ovc.</i> → <i>cldy</i> <i>Int. Rain</i>	Aftern. <i>cldy</i> <i>Int. Rain</i>	
Snowfall / -Depth — in / — in		Eve. <i>pty cldy</i>	Night <i>pty cldy</i> → Fair → <i>pty cldy</i> - <i>Int. Rain</i>	

A.M

